

# college graduate National Career Outcomes Report

IPEDS 2014-2015  
Academic Year

from Graduation to Six Months Out\*

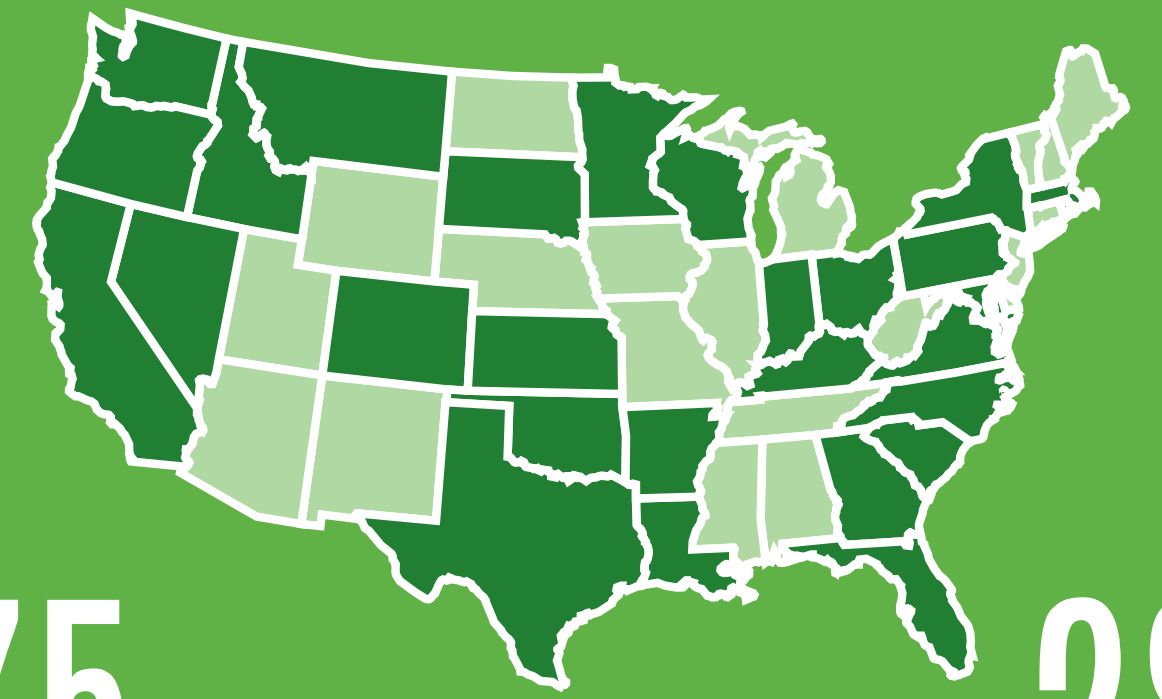
30.2% responded  
62,723 graduates surveyed



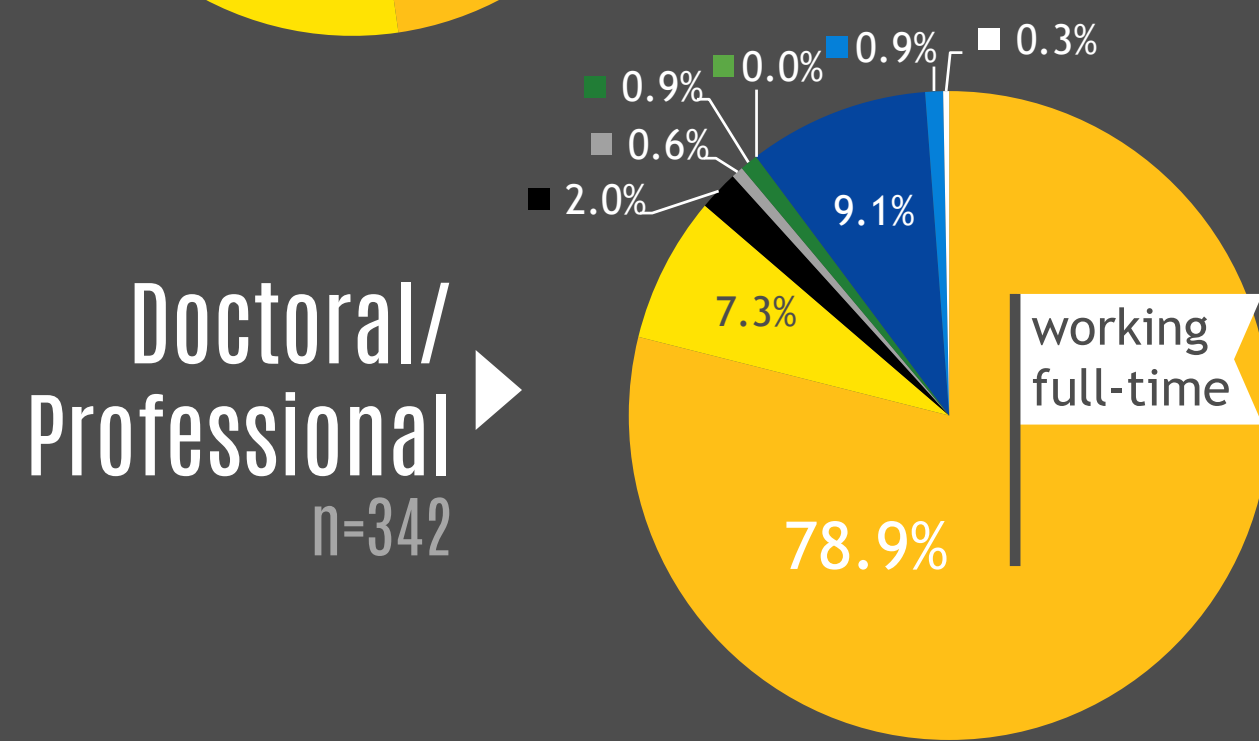
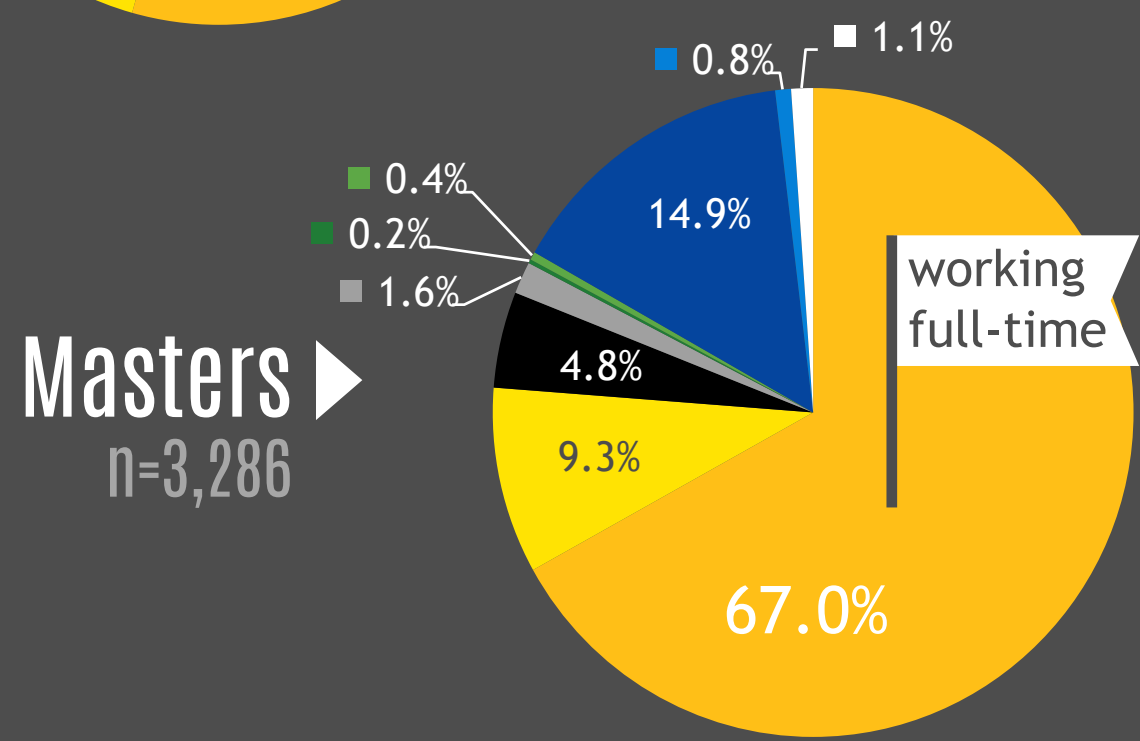
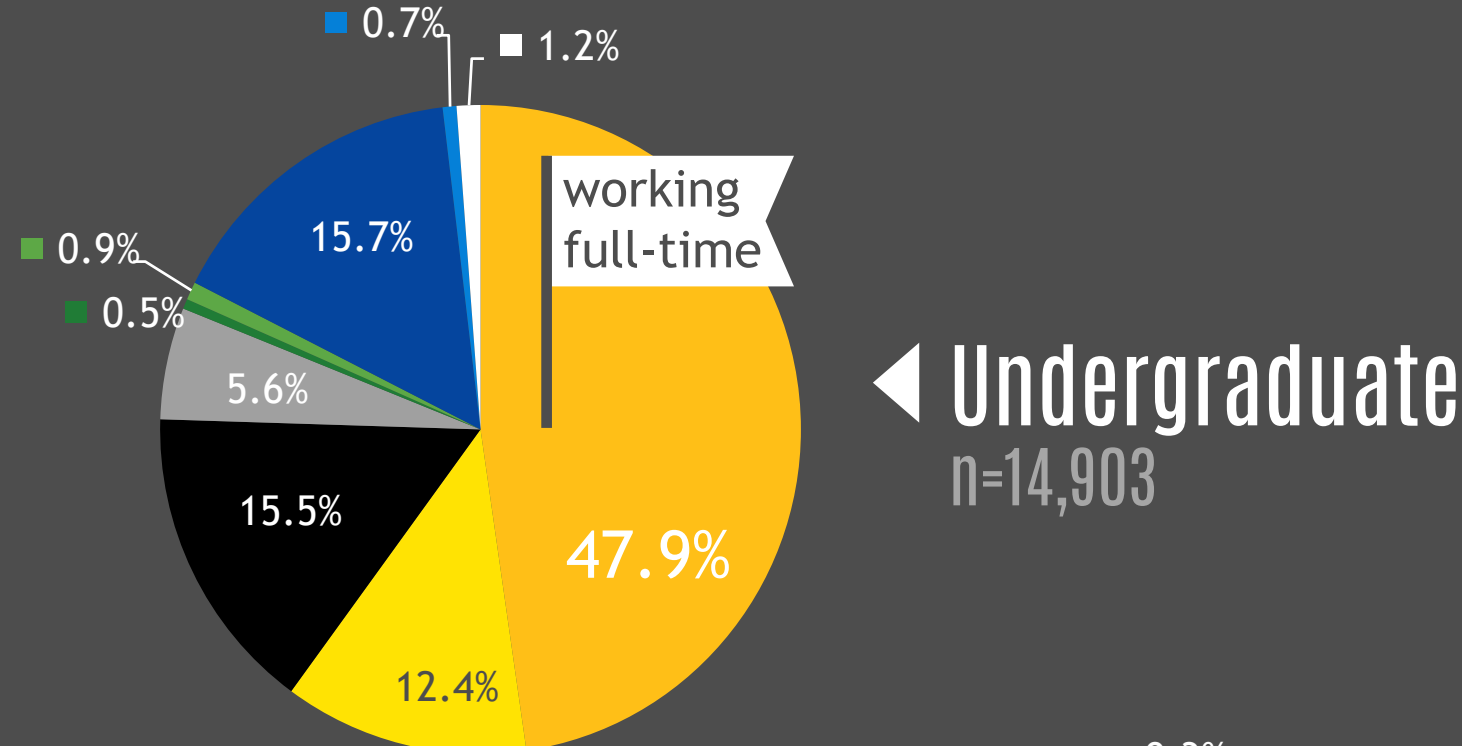
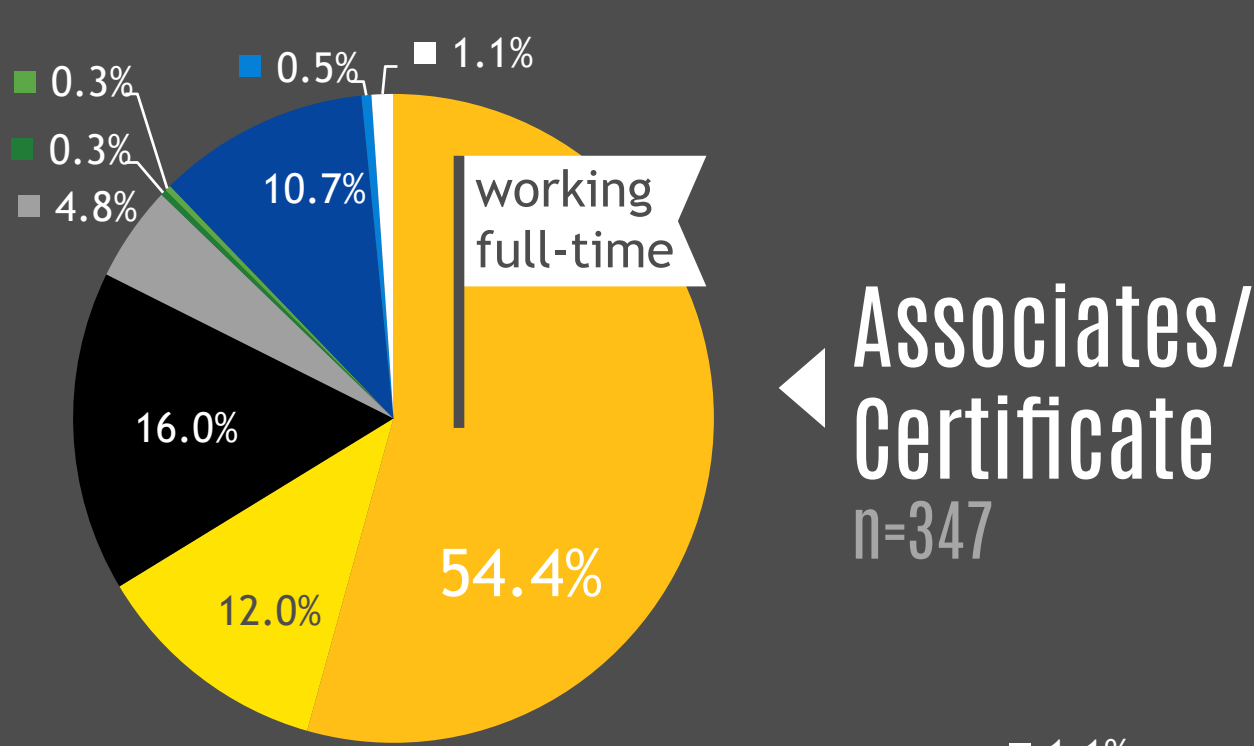
81% of employed undergraduates reported employment in a position related to their career goals

79% of employed undergraduates reported employment in a position related to their major area of study

79% of employed undergraduates reported satisfaction (satisfied or very satisfied) with their current occupation



75 Institutions  
28 States



## Primary Status by Degree Level

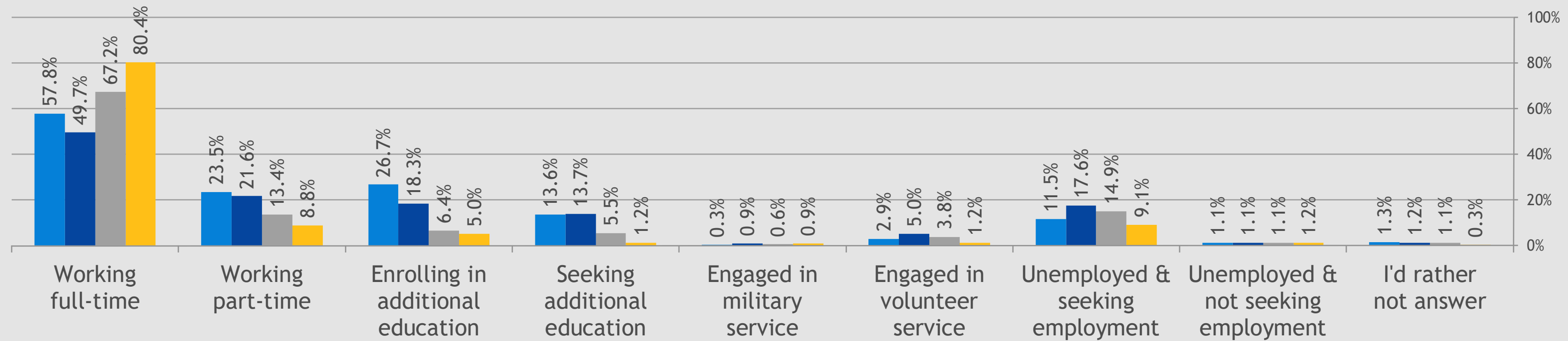


- Working full-time
- Working part-time
- Enrolling in additional education
- Seeking additional education
- Engaged in military service
- Engaged in volunteer service
- Unemployed and seeking employment
- Unemployed and not seeking employment
- I'd rather not answer

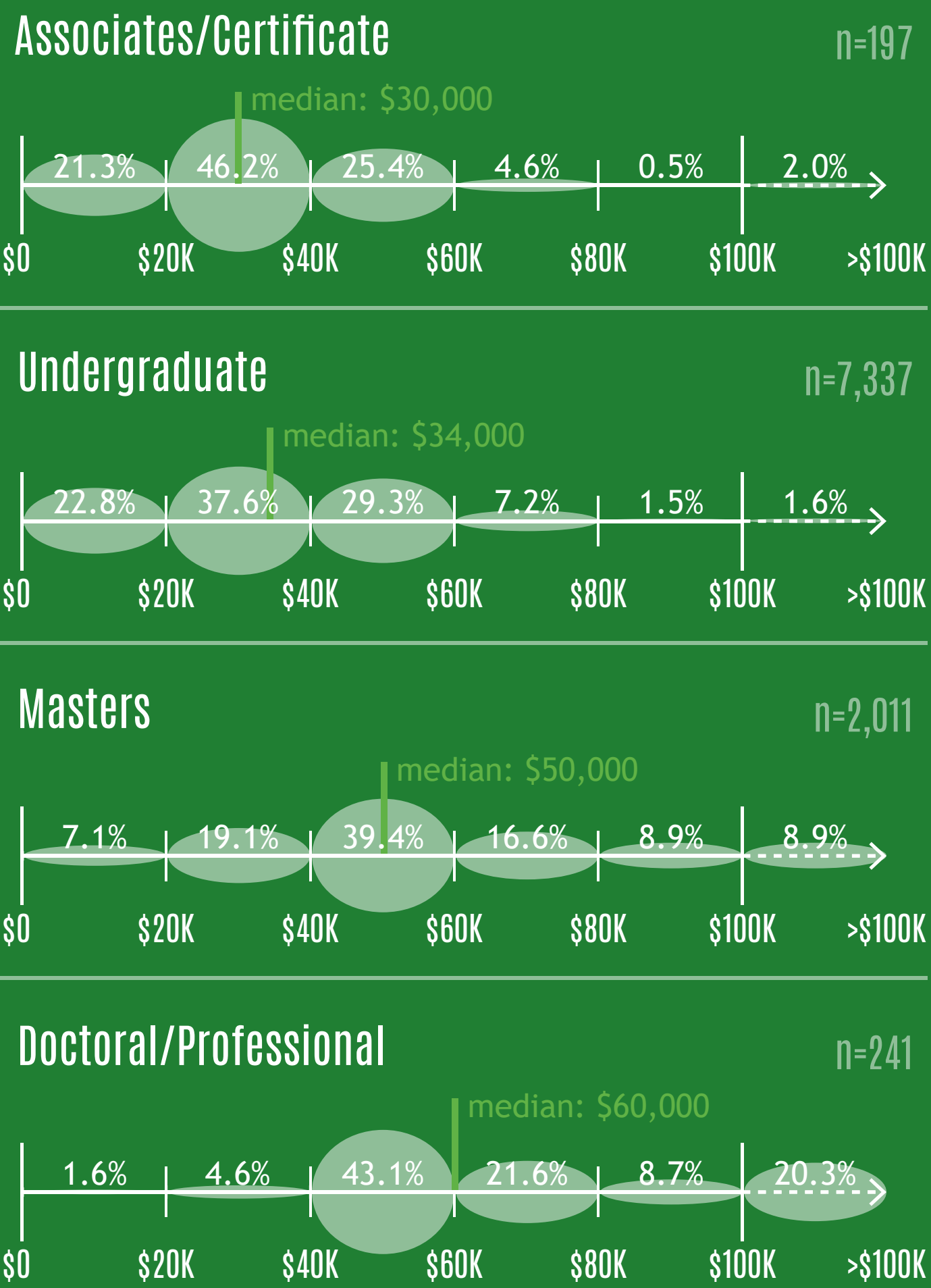
## Multiple Status by Degree Level



Associates/Certificate n=374  
Undergraduate n=14,904  
Masters n=3,286  
Doctoral/Professional n=342



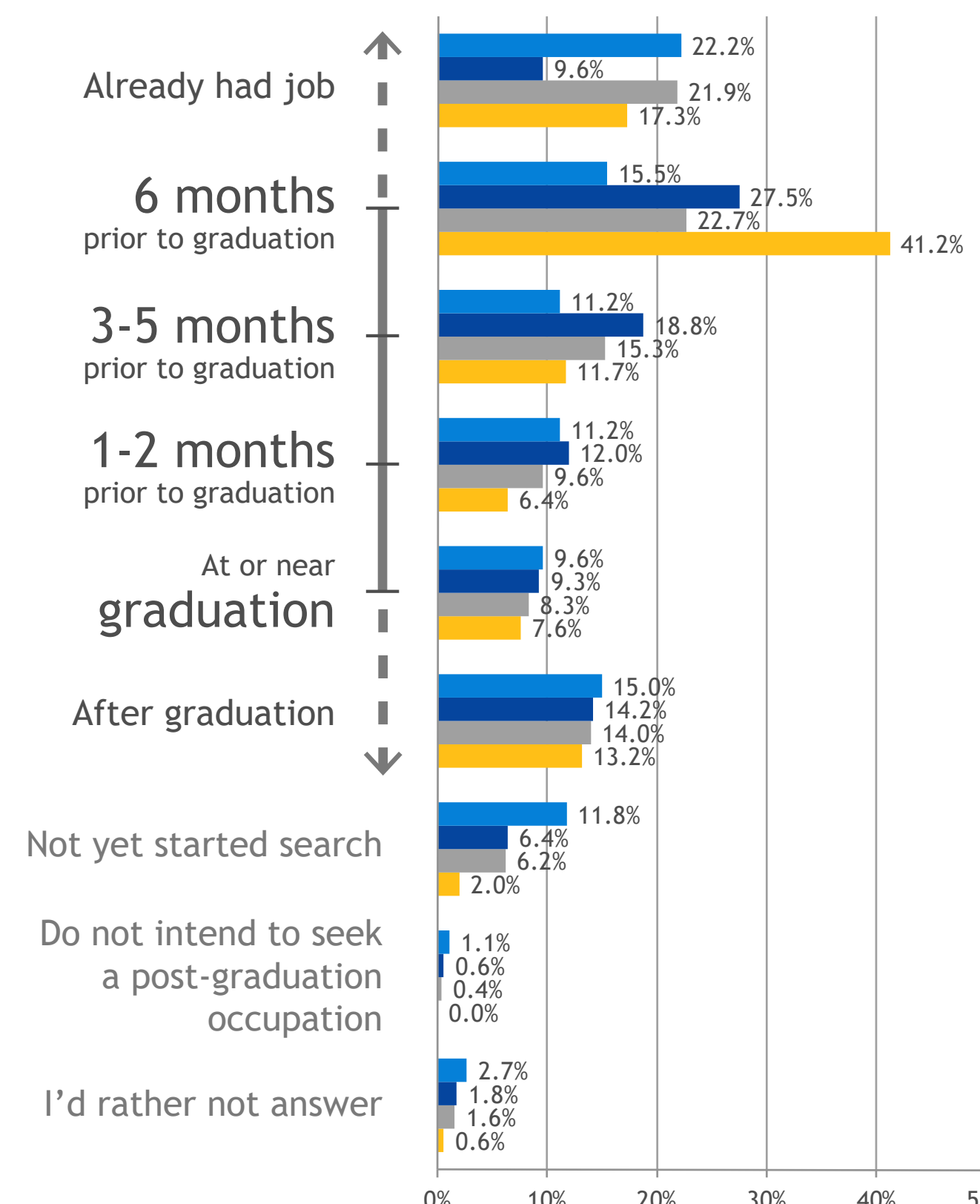
## Average Income by Degree Level\*



## Occupation Search Start Date



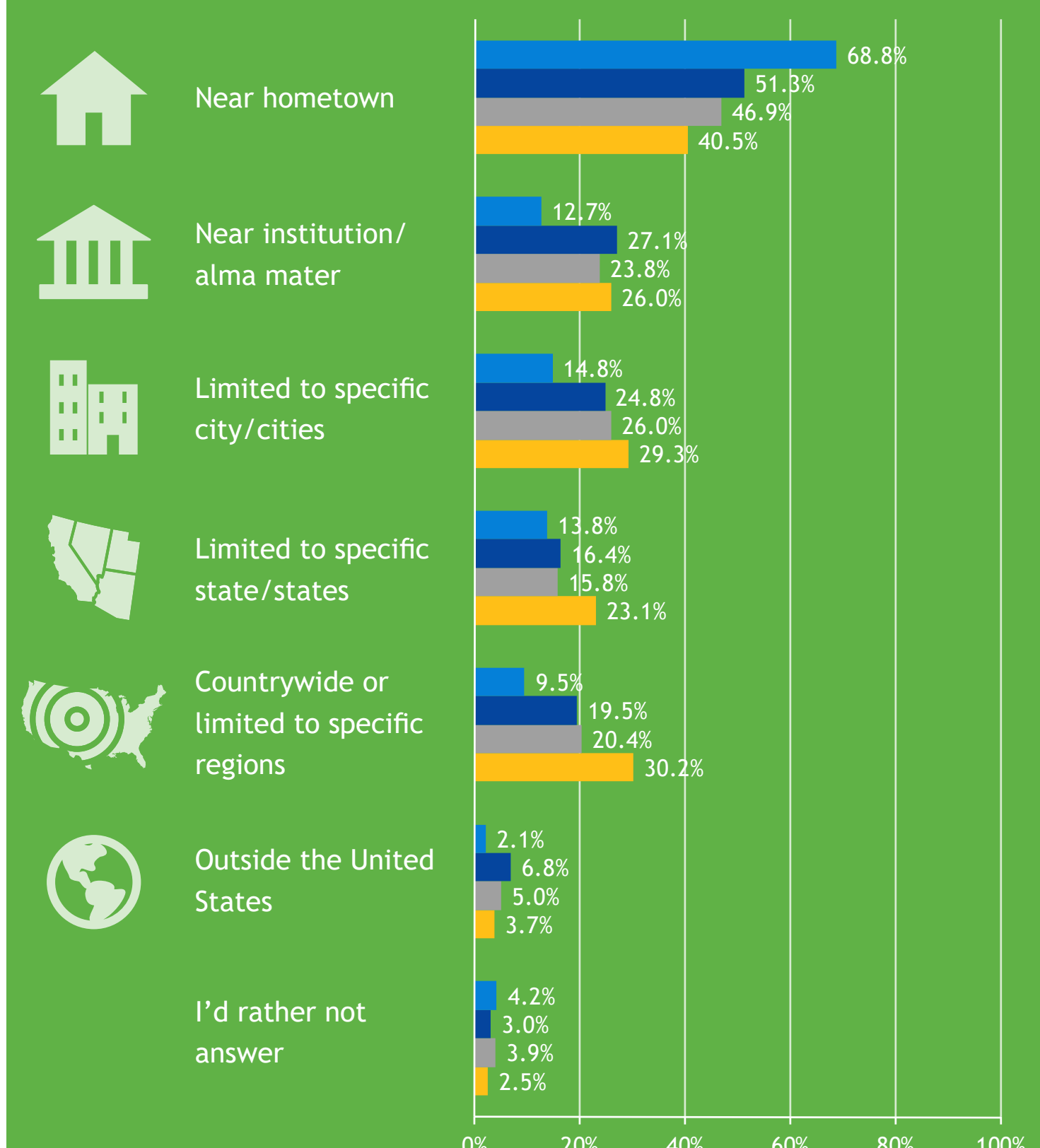
Associates/Certificate n=374  
Undergraduate n=14,904  
Masters n=3,286  
Doctoral/Professional n=342



## Employment Search Geography



Associates/Certificate n=189  
Undergraduate n=11,023  
Masters n=2,088  
Doctoral/Professional n=242



\*The information contained in this infographic is intended as a demonstration of the data collected by The Outcomes Survey (TOS). This infographic includes data on TOS respondents in the IPEDS 2014-2015 Academic Year cohort collected during the period starting one month prior to graduation up to the period ending six months post-graduation. This infographic only includes data from those institutions following the data collection standards prescribed by TOS. To protect respondent confidentiality, median incomes have been rounded to the nearest \$500 interval. For more information on TOS standards, research methodology and data collection approach, please visit [TheOutcomesSurvey.com/DataStandards](http://TheOutcomesSurvey.com/DataStandards).