

college graduate National Career Outcomes Report

**IPEDS 2014-2015
Academic Year**
from Graduation to Twelve Months Out*

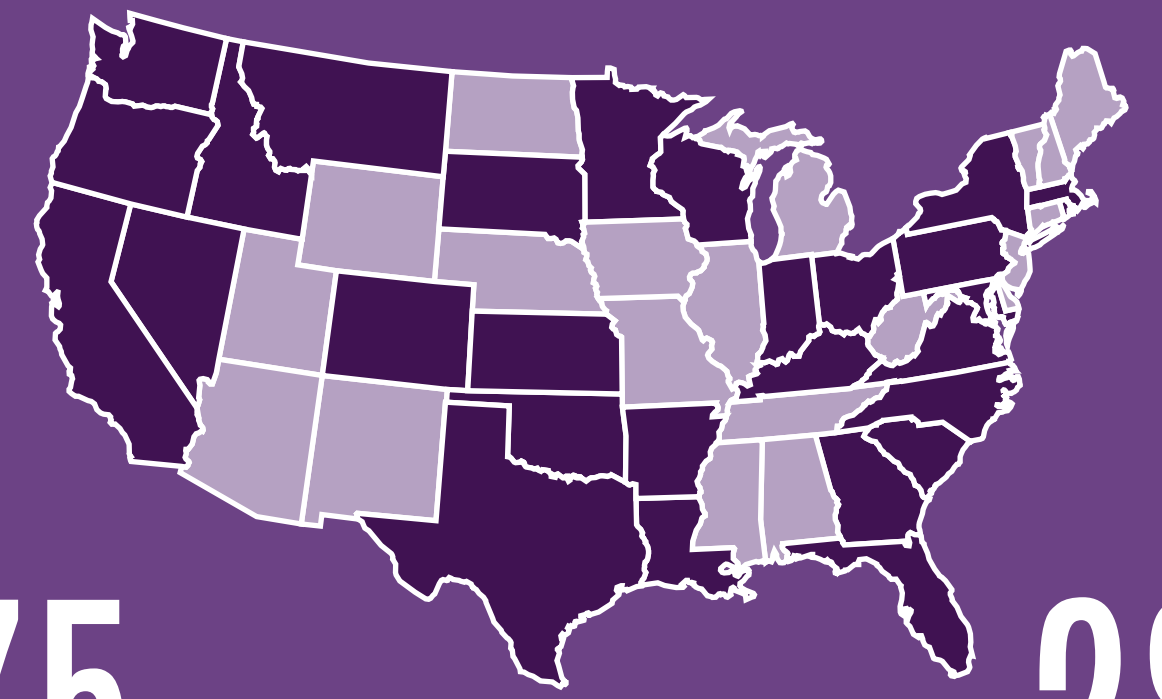
33.2% responded
62,503 graduates surveyed



81% of employed undergraduates reported employment in a position related to their career goals

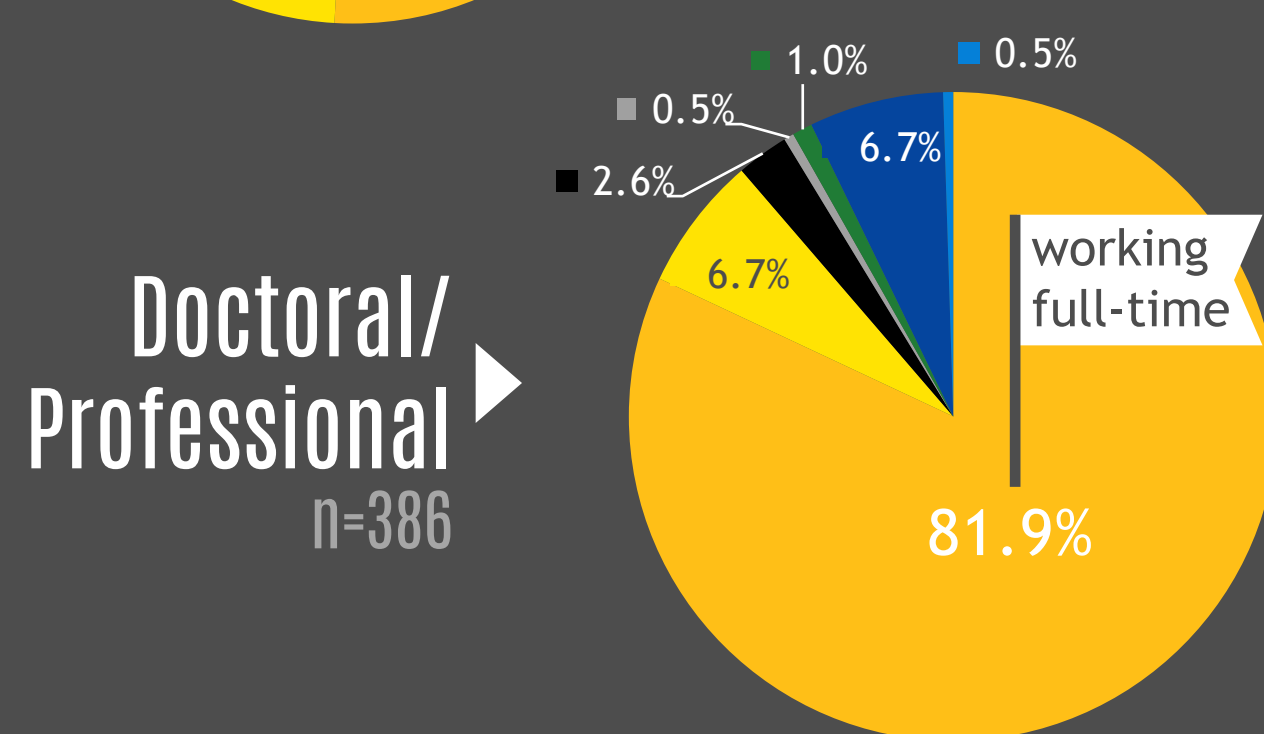
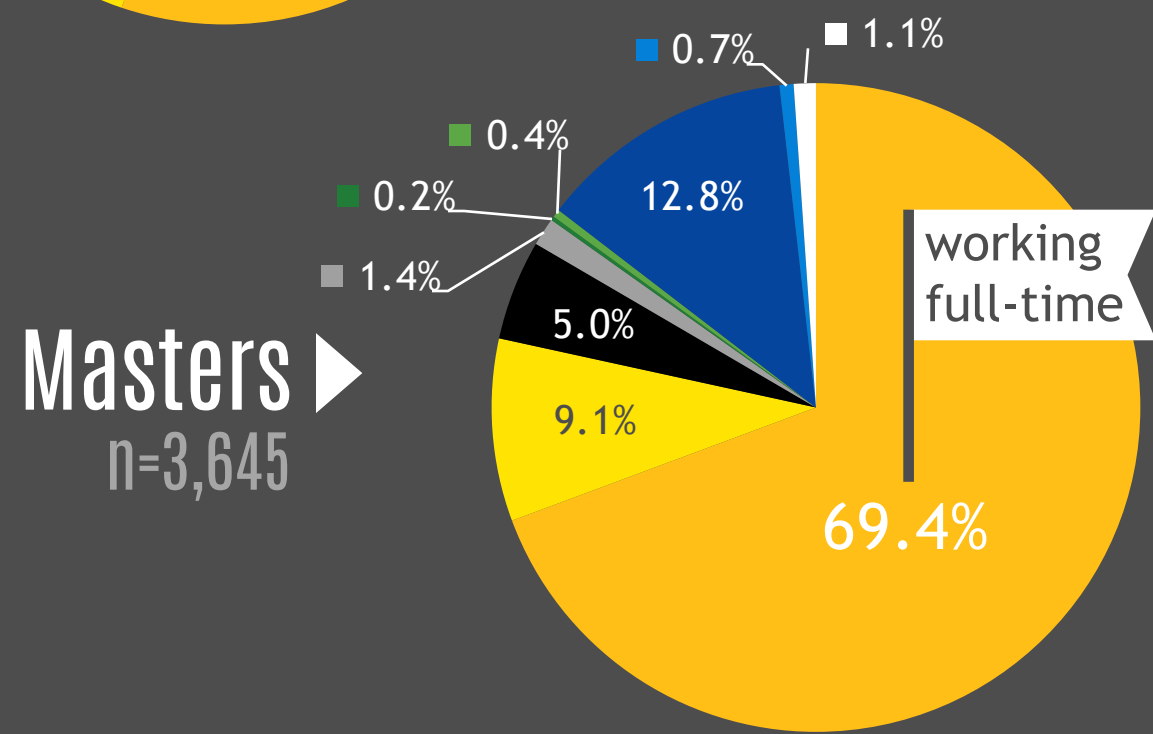
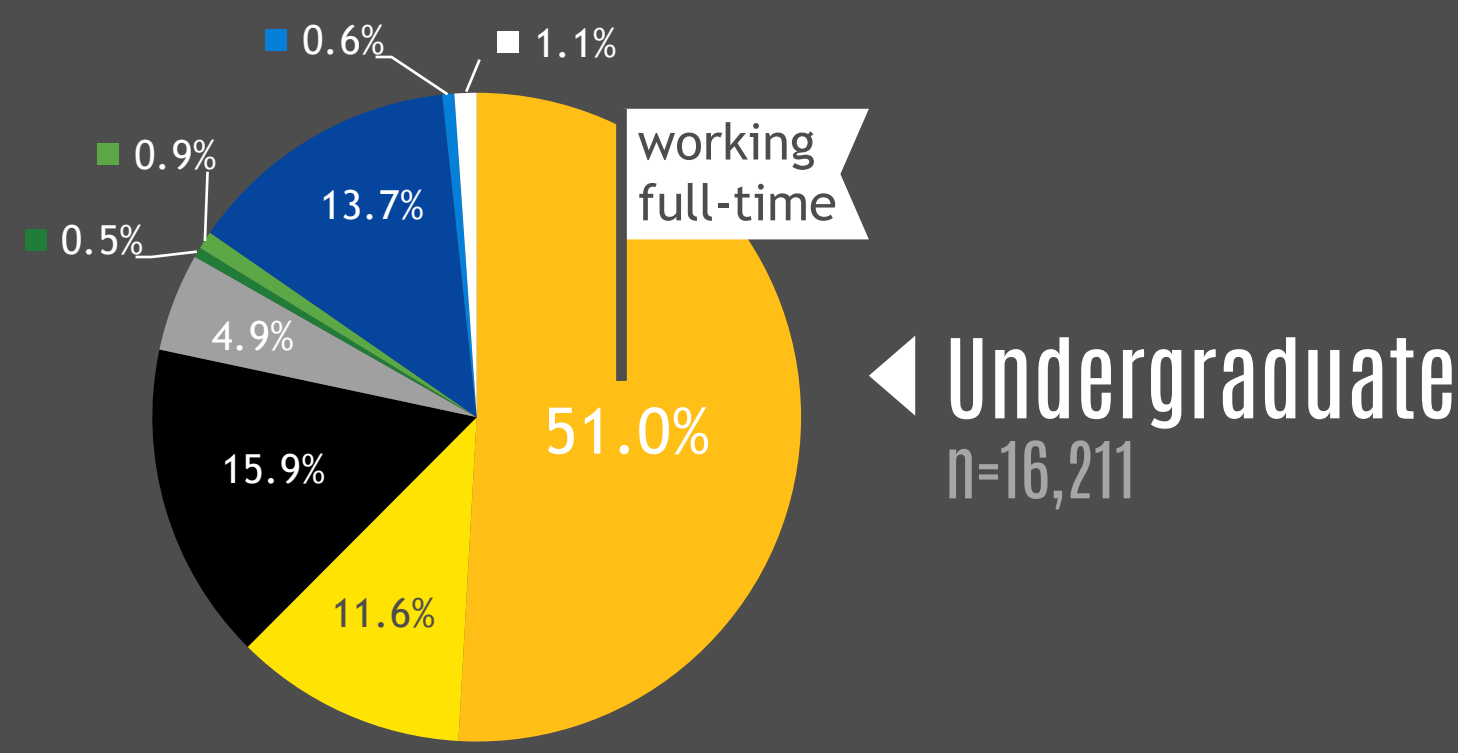
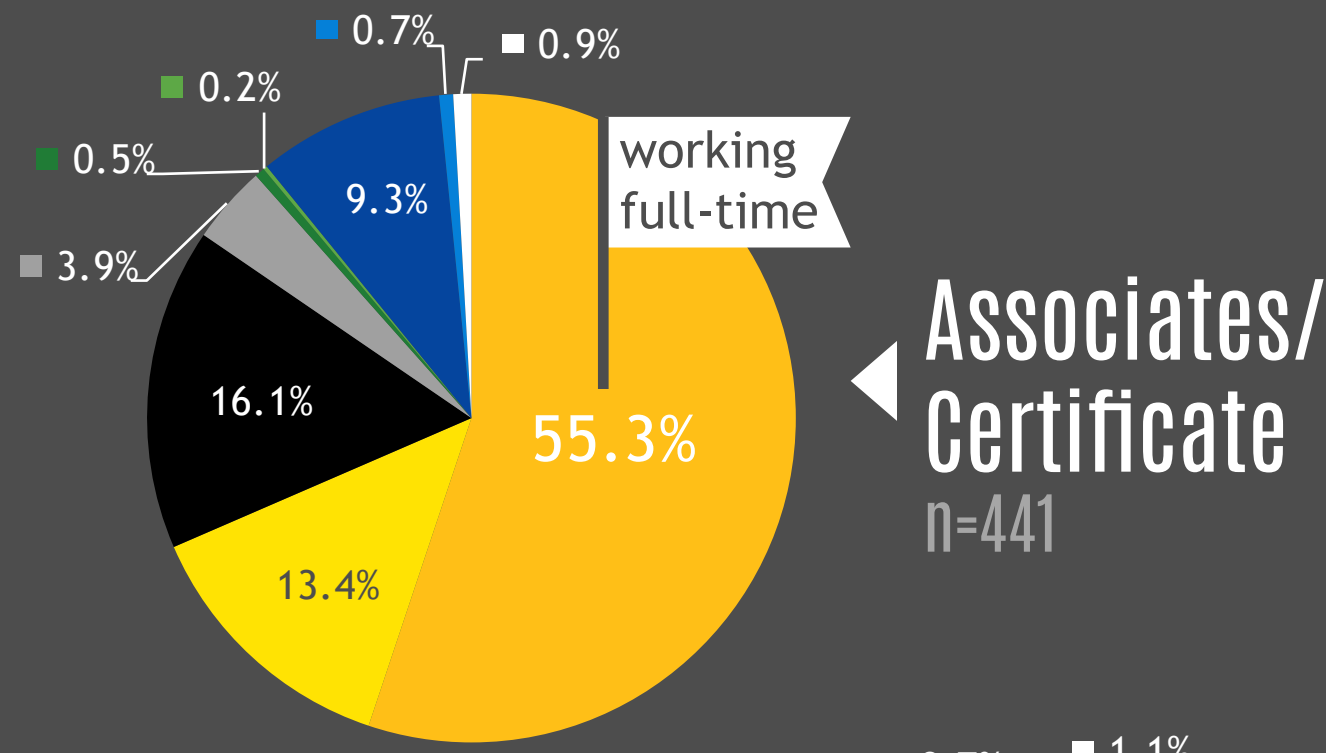
79% of employed undergraduates reported employment in a position related to their major area of study

79% of employed undergraduates reported satisfaction (satisfied or very satisfied) with their current occupation



75
Institutions

28
States



Primary Status by Degree Level

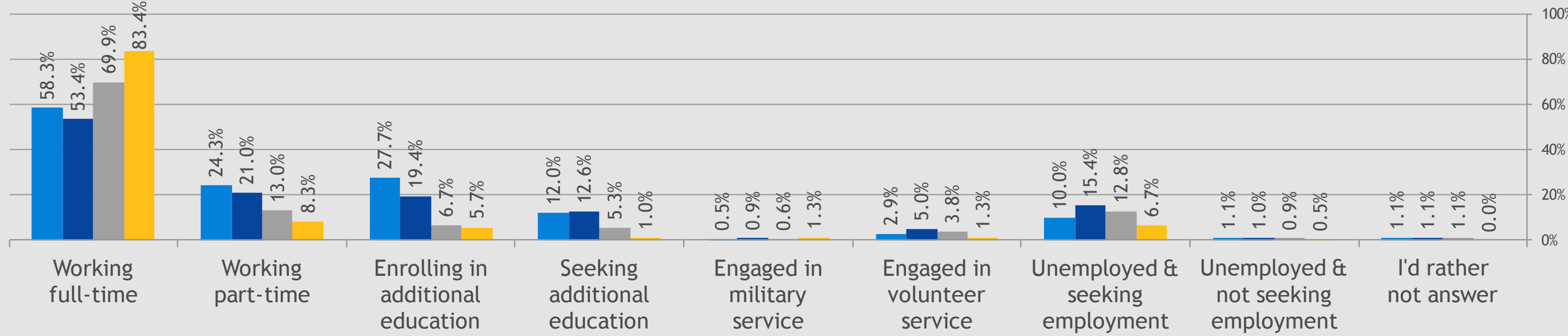


- Working full-time
- Working part-time
- Enrolling in additional education
- Seeking additional education
- Engaged in military service
- Engaged in volunteer service
- Unemployed and seeking employment
- Unemployed and not seeking employment
- I'd rather not answer

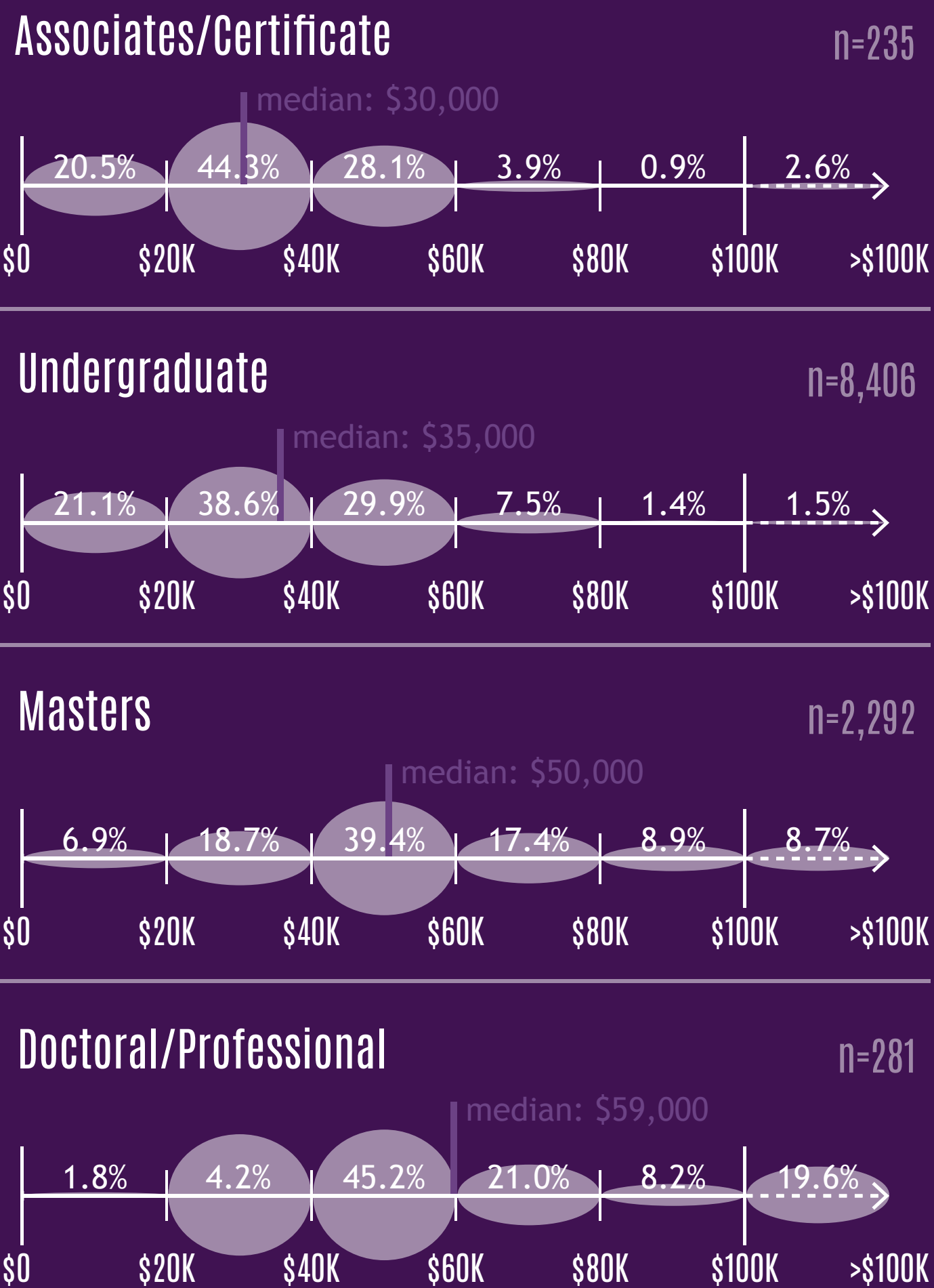
Multiple Status by Degree Level



Associates/Certificate n=441
Undergraduate n=16,213
Masters n=3,645
Doctoral/Professional n=386



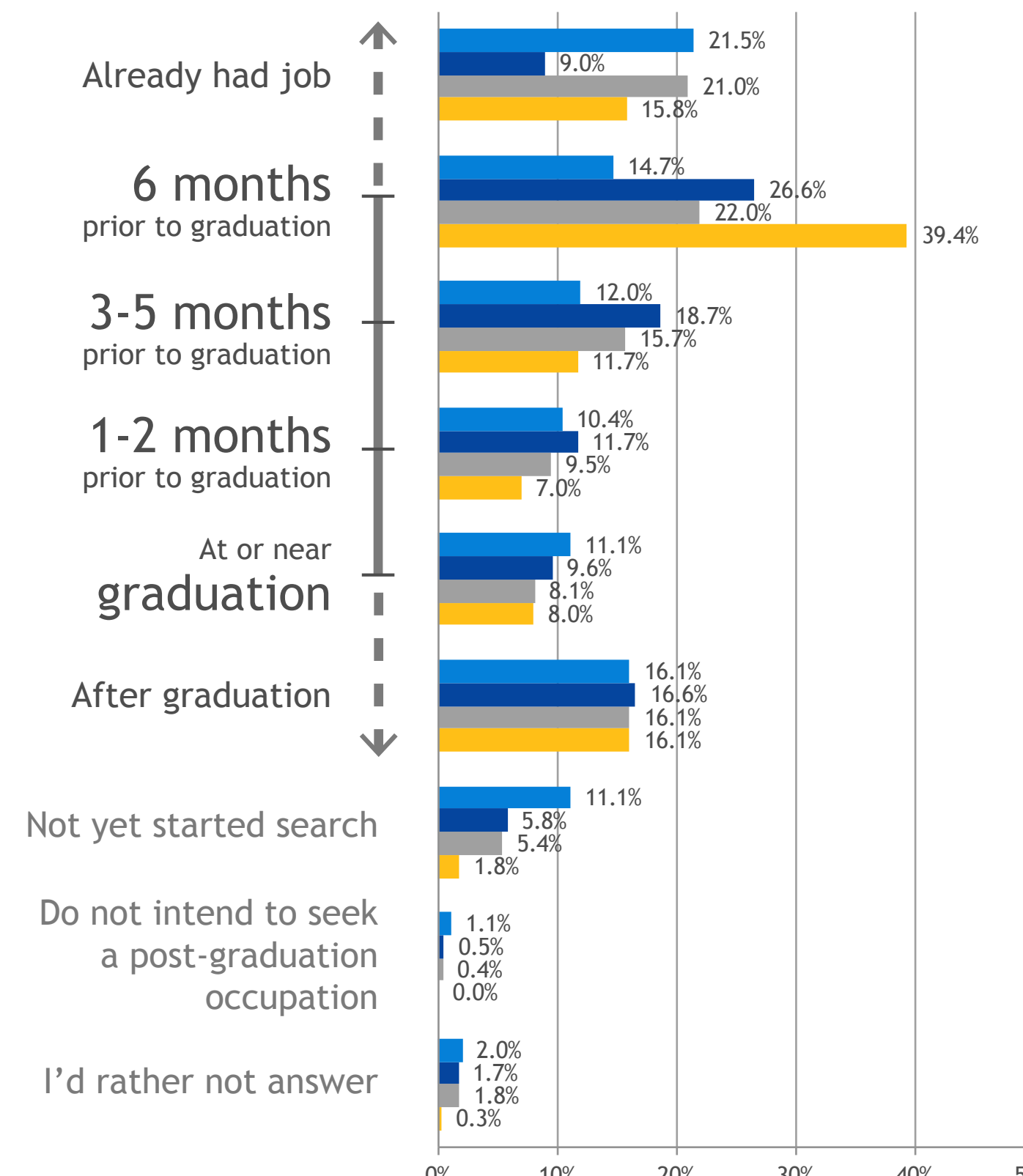
Average Income by Degree Level*



Occupation Search Start Date



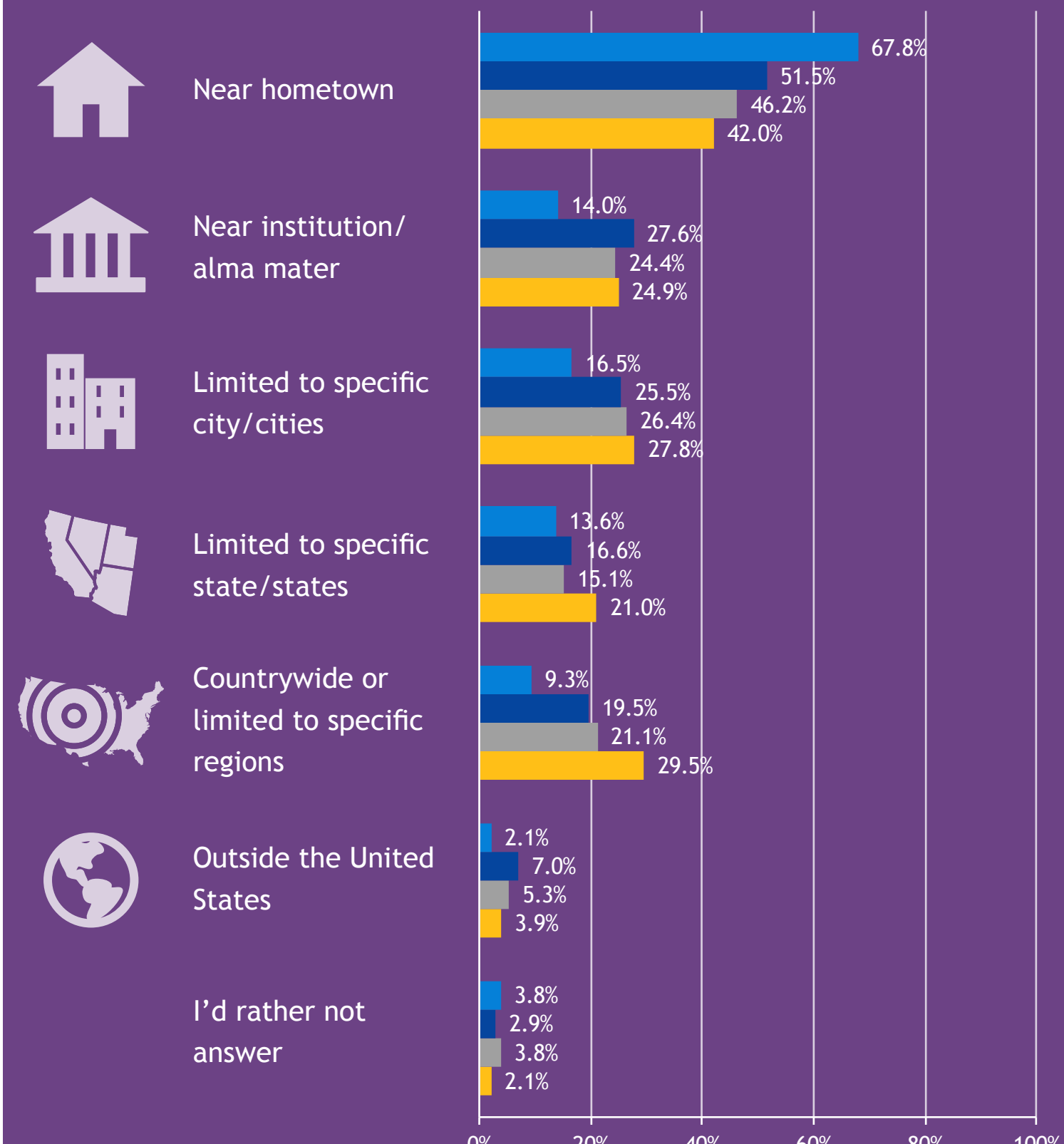
Associates/Certificate n=441
Undergraduate n=16,212
Masters n=3,645
Doctoral/Professional n=386



Employment Search Geography



Associates/Certificate n=236
Undergraduate n=12,154
Masters n=2,355
Doctoral/Professional n=281



*The information contained in this infographic is intended as a demonstration of the data collected by The Outcomes Survey (TOS). This infographic includes data on TOS respondents in the IPEDS 2014-2015 Academic Year cohort collected during the period starting one month prior to graduation up to the period ending twelve months post-graduation. This infographic only includes data from those institutions following the data collection standards prescribed by TOS. To protect respondent confidentiality, median incomes have been rounded to the nearest \$500 interval. For more information on TOS standards, research methodology and data collection approach, please visit TheOutcomesSurvey.com/DataStandards.

