

college graduate National Career Outcomes Report

**IPEDS 2015 - 2016
Academic Year**
from Graduation to Six Months Out*

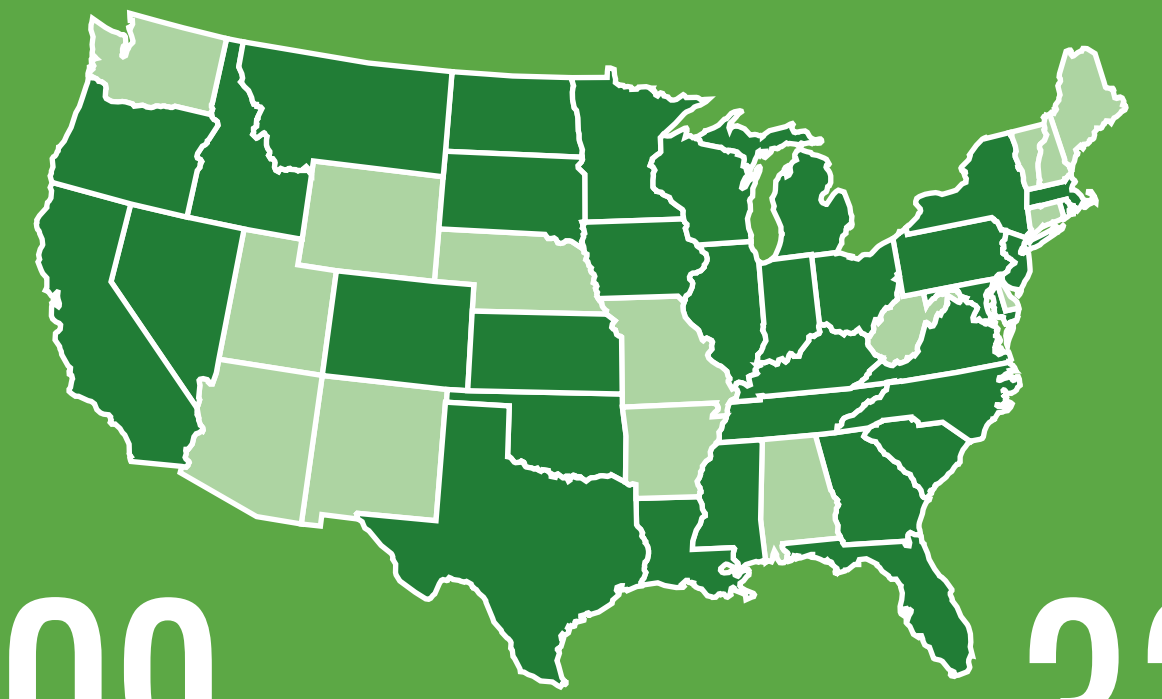
35.70% responded
106,511 graduates surveyed



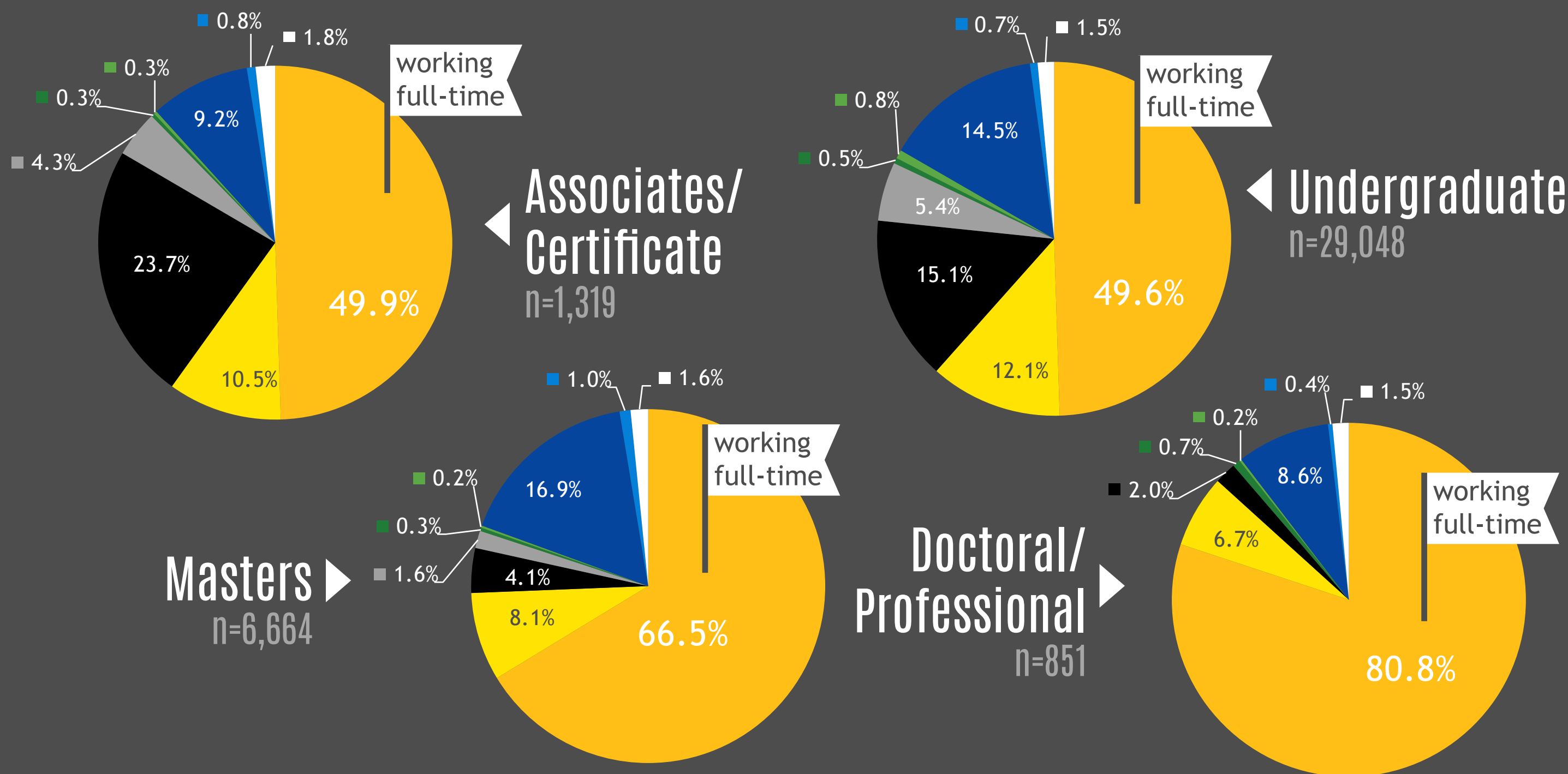
81% of employed undergraduates reported employment in a position related to their career goals

80% of employed undergraduates reported employment in a position related to their major area of study

78% of employed undergraduates reported satisfaction (satisfied or very satisfied) with their current occupation



109 Institutions
33 States



Primary Status by Degree Level

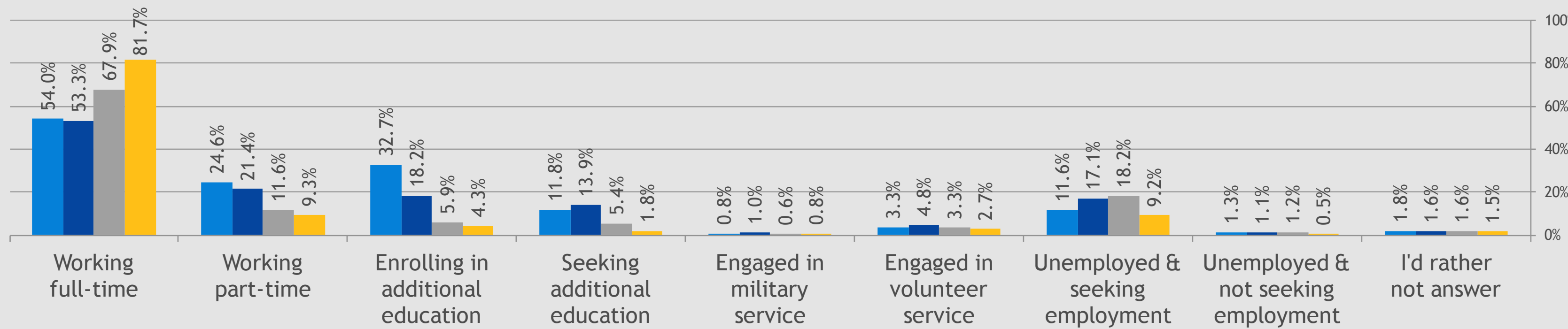


- Working full-time
- Working part-time
- Enrolling in additional education
- Seeking additional education
- Engaged in military service
- Engaged in volunteer service
- Unemployed and seeking employment
- Unemployed and not seeking employment
- I'd rather not answer

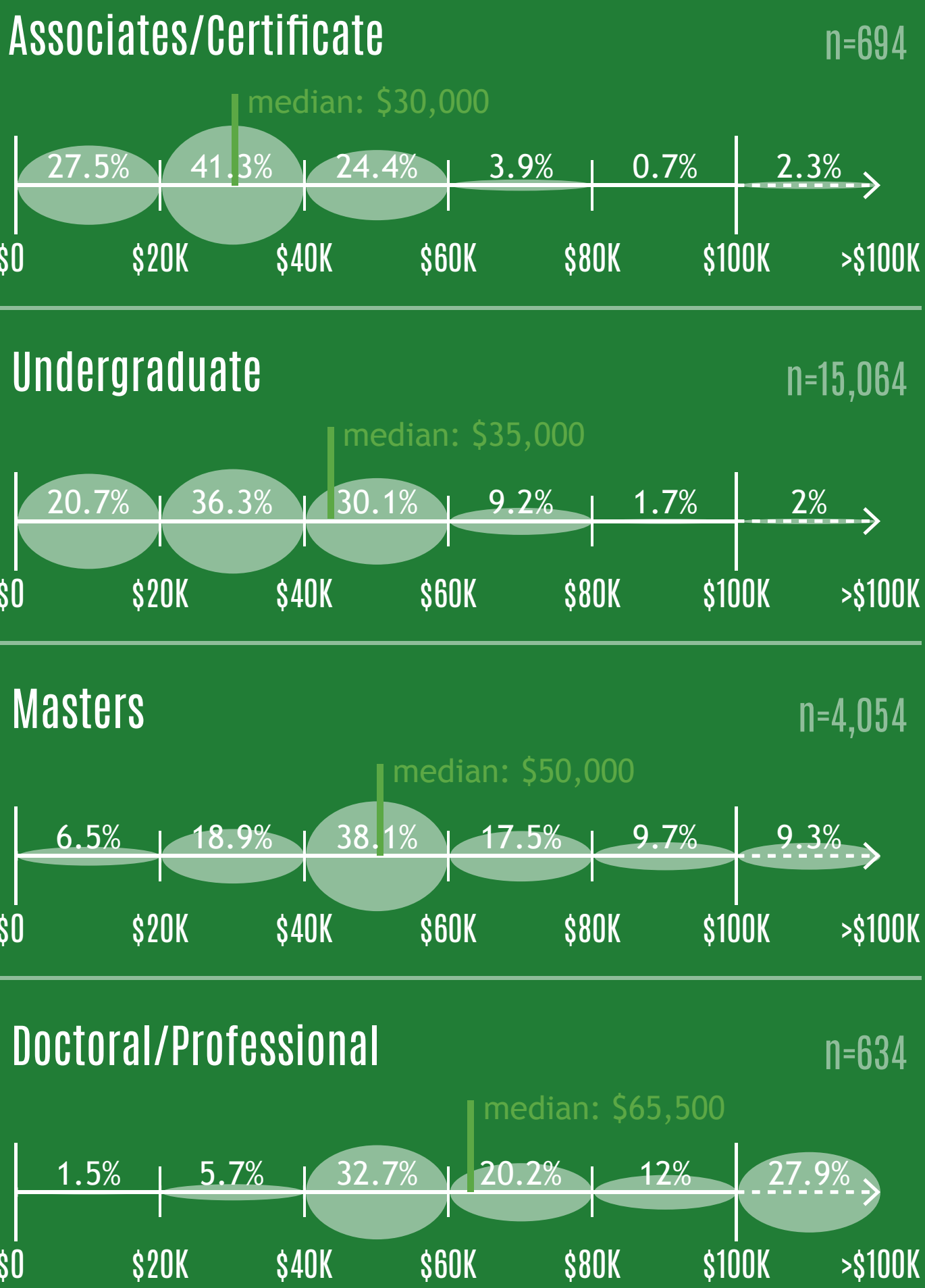
Multiple Status by Degree Level



Associates/Certificate n=144
Undergraduate n=757
Masters n=513
Doctoral/Professional n=64



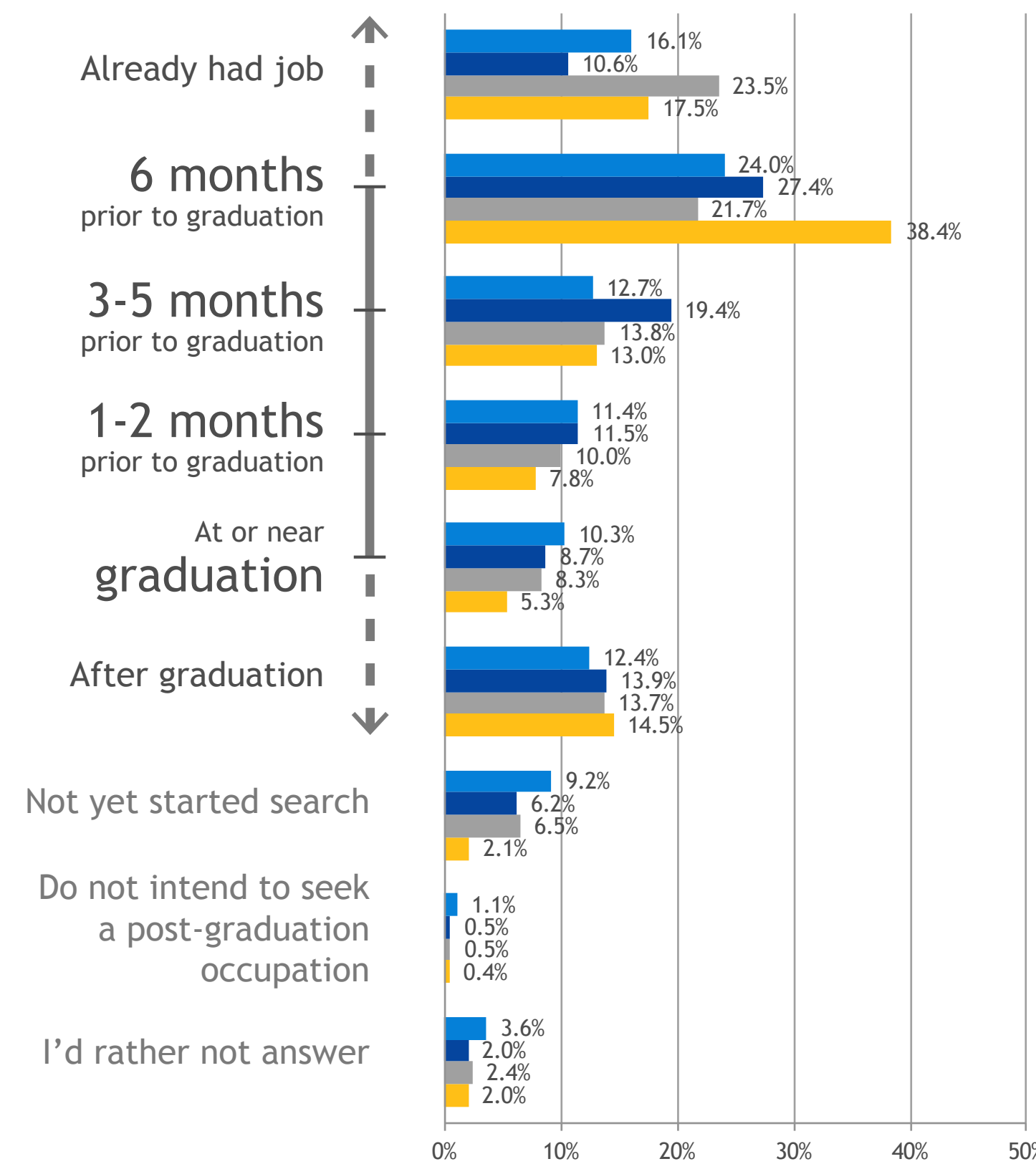
Average Income by Degree Level*



Occupation Search Start Date



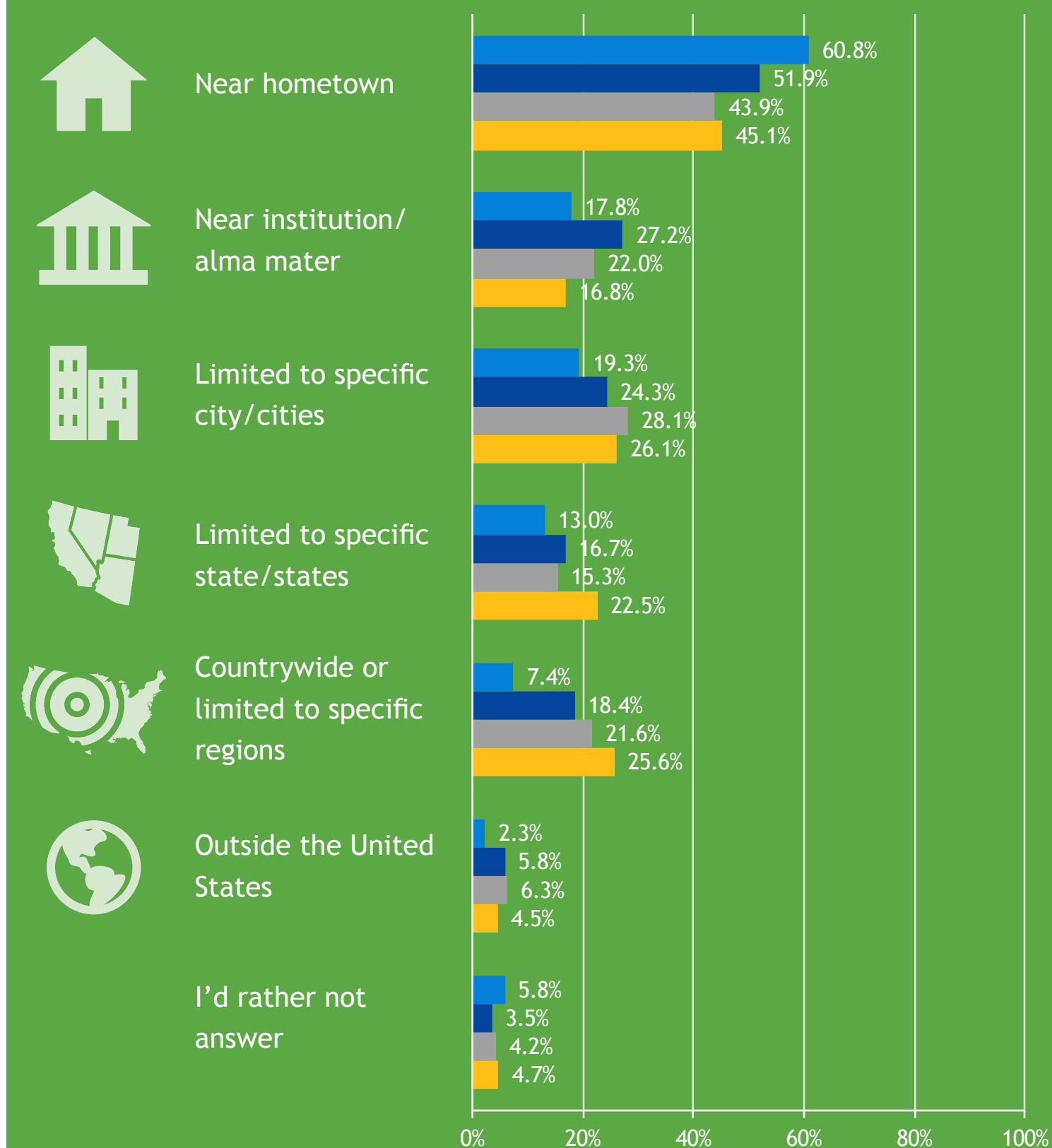
Associates/Certificate n=1,319
Undergraduate n=29,048
Masters n=6,664
Doctoral/Professional n=8,851



Employment Search Geography



Associates/Certificate n=809
Undergraduate n=20,902
Masters n=3,990
Doctoral/Professional n=601



*The information contained in this infographic is intended as a demonstration of the data collected by The Outcomes Survey (TOS). This infographic includes data on TOS respondents in the IPEDS 2015 - 2016 Academic Year cohort collected during the period starting one month prior to graduation up to the period ending six months post-graduation. This infographic only includes data from those institutions following the data collection standards prescribed by TOS. To protect respondent confidentiality, median incomes have been rounded to the nearest \$500 interval. For more information on TOS standards, research methodology and data collection approach, please visit TheOutcomesSurvey.com/DataStandards.

